

DB861

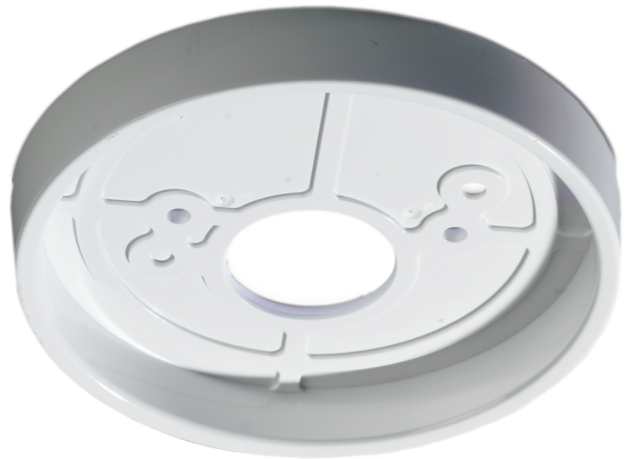
Apollo Series 60 backplate for ingress protection (45681-233)

General

The DB861 back plate provides a high degree of protection against the ingress of water or dust into the back of the detector mounted directly onto a mounting box. Holes are provided for the fixing screws whilst two knockouts cater for European standard fixing entries.

Special Note

When the DB961 is used with the DB950 base, the number tag of the XPERT card must be snapped of and placed in one of the knockout slots provided on the DB861.



Details

- Protects against water/dust ingress
- Improved performance
- Support series 630, 650, 800 and 900 series bases

DB861

Apollo Series 60 backplate for ingress protection (45681-233)

Technical specifications

Physical

Physical dimensions	100 x 10 mm (Ø x H)
Colour	White

Environmental

Environment	Indoor
-------------	--------



As a company of innovation, Carrier Fire & Security reserves the right to change product specifications without notice. For the latest product specifications, visit firesecurityproducts.com online or contact your sales representative.